

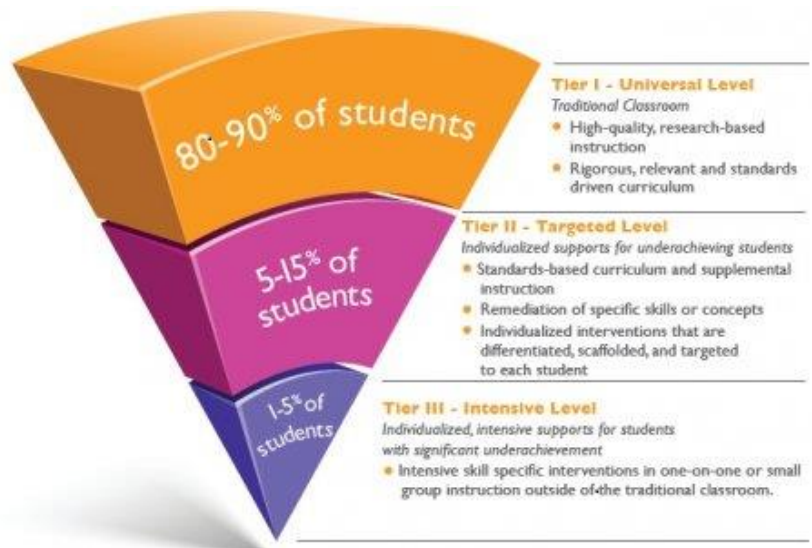
## RESPONSE TO INTERVENTION INFORMATION FOR PARENTS

### WHAT IS RESPONSE TO INTERVENTION?

Response to Intervention (RTI) is a proactive approach schools use to help all students, including struggling learners. It is not a special kind of program or book. Many schools use this approach to make sure that every student has opportunities to learn and work on grade level. It is used most often in reading and math and may also be used to improve student behavior. This process begins with high-quality instruction for all children in the general education classroom. Struggling learners are provided with interventions at increasing levels of intensity. Progress is closely monitored to ensure each student is responding to the interventions provided. The goal of RTI is to help *all* students be successful.

### THE ESSENTIAL COMPONENTS OF RTI

- **Universal Screening** - Universal screenings are assessments administered to all students to determine which students are at-risk of not meeting academic expectations.
- **Progress Monitoring** - Progress monitoring is used to determine the effectiveness of instruction and/or interventions.
- **The Multi-Tiered System of Support** - The Multi-Tiered System of Support includes three tiers, each reflect increasing intensity of interventions to meet individual student needs.
- **Data-Based Decision Making** - Lubbock ISD primarily uses the problem-solving approach which utilizes staff members' input to identify students at-risk and develop highly individualized student plans for intervention. These plans are then monitored and evaluated to determine effectiveness.



### RESOURCES FOR PARENTS:

[National Center on Response to Intervention](#)

[RTI Action Network](#)

[Building RTI Capacity](#)