



UNLEASH YOUR

# creative potential

2020-2021 PTA Reflections theme is...

## “I MATTER BECAUSE...”

- Entries are due on Monday, November 9
- Students put them in the Reflections box in the Ramirez Main Office
- All entry forms and complete rules are found on [txpta.org](http://txpta.org) (member programs/ reflections/ eligibility & participation/ leader resources)
- Judging will take place in November
- Advancing entries will be judged at the local/state/national level
- All entries must include a title and 10-100 word artist statement.
- A household member must be a member of PTA by Oct. 31
- Questions- email [wendy.drake@ttu.edu](mailto:wendy.drake@ttu.edu)

The arts – and the National PTA Reflections program – support student success and serve as a valuable tool for building strong partnerships in your school community. Celebrate arts learning in your school community with Reflections.

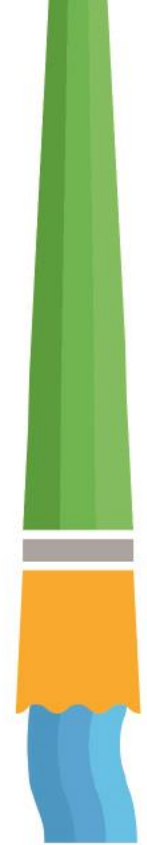
Students are to create an original piece of art without help from adults or other students in one of the following areas:  
 Dance Choreography  
 Film Production  
 Literature  
 Music Composition  
 Photography  
 Visual Arts  
 Special Arts Division

### ABOUT REFLECTIONS

Reflections has been a staple arts program in many schools for 50 years. Through the efforts of our Local PTAs, millions of students have found a creative outlet in the areas of dance choreography, film production, literature, music composition, photography, and visual arts.



SPONSORED BY **WHATABURGER.**





everychild.one voice.®

# National PTA Reflections®

## Arts Category Rules



Choose one or more categories below to create original work that interprets the **2020-21 PTA Reflections theme: I Matter Because....** Complete a student entry form and submit both to your PTA. *(Include arts category, grade and full name on back of artwork or envelope)*

Submissions will be reviewed by experienced artists for interpretation of theme, creativity and technique.  
We look forward to celebrating your artistry and achievement in the arts!

**Participation Requirements:** The student or at least one person from their primary household must be a current member of the Local PTA/PTSA where the student is participating. Each Local PTA/PTSA may determine a date by which the member must join. For the full eligibility description and participation options for home-school families, virtual schools and non-PTA schools, please consult the Texas PTA Website at <http://www.txpta.org/reflections-participation>.

**Entry Requirements:** Each entry must be the original work of the participating student. Help from an adult or collaboration with other students is not allowed except in the Special Artist Division (see Special Artist guidelines below). Other individuals may appear in or perform a student's work, but the work itself must be the creative product of one student only.

**Copyright:** Use of copyrighted material, including any copyrighted cartoon characters or likeness thereof, is not acceptable in any submission, with the following exceptions: entries may include public places, well-known products, trademarks or certain other copyrighted material as long as that copyrighted material is incidental to the subject matter of the piece and/or is a smaller element of a whole. The resulting work cannot try to establish an association between the student and the trademark/business/material, or influence the purchase/non-purchase of the trademarked good. Collages may include portions of existing copyrighted works, such as photographs, magazine clippings, internet images and type cut out of a newspaper, as long as those portions of copyrighted works are used to create a completely new and different work of art.

**Dance Choreography:** Solo and ensemble works of all dance styles are accepted. Entrant must be the choreographer and may also be the performer, or one of the performers. If background music is used, cite on entry form. **Video** file must not exceed 5 min. and 1 GB in size. Accepted formats: AVI, FLV, WMV, MOV, MP4. **Packaging:** Flash or disk inside envelope with student entry form attached to outside in sheet protector.

**Film Production:** Accepted short film styles include: Animation, narrative, documentary, experimental or media presentation. Use of PowerPoint is prohibited. Entrant must be the screenwriter, cinematographer, editor and producer. If background music is used, cite it on the entry form. **Video** file must not exceed 5 min. and 1 GB in size. Accepted formats: AVI, FLV, WMV, MOV, MP4. **Packaging:** Flash or disk inside envelope with student entry form attached to outside in sheet protector.

**Literature:** Accepted forms of fiction and nonfiction include: Prose, poetry, reflective essay, screen play and play script, narrative, and short story. Entrants may write in their primary language as long as an interpretive English translation is also attached. Use of copyrighted material is prohibited. **Writing** must not exceed 2,000 words and may be handwritten or typed. Accepted format: Single-sided on 8 ½x11" paper. **Packaging:** 2 copies of literature inside folder with student entry form attached to outside.

**Music Composition:** All music styles and combinations of instrumentation are accepted. Entrant must be the composer and may also be the performer, or one of the performers. Use of copyrighted material is prohibited. **Audio** file must not exceed 5 min. and 1 GB in size. Accepted formats: MP3, WMA, WAV, ACC, FLAC. **Printed Notation** (score/tabulature) is only required for middle and high school divisions. **Packaging:** Flash or disk inside envelope with student entry form attached to outside in sheet protector.

**Photography:** Photo must be a single print. Collages and collections of photos are not accepted. Entrant must be the photographer and may use a variety of digital editing techniques including but not limited to, multiple exposure, negative sandwich and photogram. Use of copyrighted material is prohibited. **Print image** dimensions must be no smaller than 3x5 inches and no larger than 8X10 inches. Final product should not be larger than 11x14 inches with matting. Framed prints are not accepted. **Packaging:** attach student entry form to back with sheet protector.

**Visual Arts:** Accepted forms of visual art include: 2D original print, drawing, painting, collage (cut and pasted materials such as clippings and photos), metal etching or punch work, fiber work or computer-generated artwork. Frames and artwork containing loose materials are not accepted. Matting is accepted. Dimensions must not exceed 24x30 inches, including mat. Paper entries must be mounted on sturdy material.\* **Packaging:** attach student entry form to back with sheet protector. Cover front of artwork with butcher (or like) paper, securing it to the back of artwork without covering form.

\*Note these guidelines are specific to Texas PTA. While other states are incorporating additional 3D art mediums, Texas PTA has made the decision to only accept 2D Visual Arts entries.

**Special Artist Division:** Students who identify as having a disability and may receive services under IDEA or ADA: Section 504 may enter in the Special Artist Division or grade division most closely aligned to their functional abilities. The **Special Artist Division** welcomes all grades and all abilities and offers non-artistic accommodations (e.g. adaptive technology; transcribing; holding a camera) for students to participate fully in PTA Reflections. Assistants must refrain from being involved in the artistic process (e.g. developing an artist statement, choreography, music lyrics, storyboards, etc.) Student recognition and awards are announced as part of the Special Artist Division.



THE LOCAL (SCHOOL) PTA MUST COMPLETE THIS SECTION BEFORE ADVANCING

Verify household membership and complete partial or illegible entry forms. CORRECT and COMPLETE CONTACT INFORMATION is VERY important as the entry progresses so the family receives information about possible awards and ceremonies.

School PTA Contact Name: Phone Number: Email: Household Membership Verified by: Date Joined:

Local (School) PTA must attain Active Status with Texas PTA by October 31st

- PTA has reported at least 20 members to Texas PTA Board Member Information Reported to Texas PTA

Please type or print clearly in black or blue ink (do not use pencil). This form must be completed in its entirety. If additional space is needed, please continue onto the back or a separate sheet of paper and clearly mark with your full name.

The student or at least one person from their primary household must be a current member of the Local PTA/PTSA where the student is participating. Encourage members to join before judging begins.

REQUIRED PTA MEMBER NAME(S): CHOOSE ONE: Current Member/Date Joined: Please contact me! We need to join. The best way to contact me is by:

STUDENT NAME: GRADE: AGE: M/F:

MAILING ADDRESS:

CITY: STATE: ZIP:

PARENT/GUARDIAN NAME(S):

PARENT/GUARDIAN PHONE: E-MAIL:

SCHOOL NAME: SCHOOL DISTRICT:

TEACHER NAME: TEACHER EMAIL:

Ownership in any submission shall remain the property of the entrant, but entry into this program constitutes entrant's irrevocable permission and consent that PTA may display, copy, reproduce, enhance, print, sublicense, publish, distribute and create derivative works for PTA purposes. PTA is not responsible for lost or damaged entries. Submission of entry into the PTA Reflections program constitutes acceptance of all rules and conditions. I agree to the above statement and the National PTA Reflections Official Rules.

Signature of student

Signature of parent/legal guardian (required if child is under 18 years)

JUDGING INFORMATION

GRADE DIVISION (Check One)

- PRIMARY (Preschool- Grade 2) HIGH SCHOOL (Grades 9-12) INTERMEDIATE (Grades 3-5) SPECIAL ARTIST\* (All Grades) MIDDLE SCHOOL (Grades 6-8)

\*Please refer to the Special Artist Guidelines if you believe your entry qualifies for this division. Special Artist entrants should select both their grade division and the Special Artist box.

ARTS CATEGORY (Check One)

- DANCE CHOREOGRAPHY MUSIC COMPOSITION FILM PRODUCTION PHOTOGRAPHY LITERATURE VISUAL ARTS

TITLE OF ARTWORK (REQUIRED):

ENTRY DETAILS: (Dance/Film: cite background music; Music: musician(s)/instrumentation; Literature: word count; Photo/Visual Arts: materials & dimensions)

ARTIST STATEMENT (REQUIRED): Statement must be 10- 100 words describing how your work relates to the theme. \*Many times, the artist statement will make a huge difference during judging because this is where you as the artist can explain in your own words, your thoughts and feelings for the piece.

Blank lines for artist statement